

# PXI and AXIe Modular Instrumentation

M9018A PXIe Chassis  
M9502A AXIe Chassis  
M9505A AXIe Chassis



Tested Computer List  
Technical Note



**DISCOVER** the Alternatives...

... Agilent **MODULAR** Products



**Agilent Technologies**



## OVERVIEW

This personal computer and controller technical note has been prepared to provide the system designer with a list of tested computers that are compatible with Agilent Technologies PXI and AXIe chassis. The testing in this guide covers both the PCIe link and enumeration of the chassis.



Figure 1. M9045B PCIe ExpressCard Adapter and Y1200B PCIe Cable

### Agilent Technologies modular chassis tested:

- Agilent M9018A PXIe Chassis
- Agilent M9502A AXIe Chassis
- Agilent M9505A AXIe Chassis

### Personal computing devices tested:

- Laptop PC
- Desktop PC
- Tested rack mount PCs
- Tested PXIe embedded PCs



Figure 2. M9502A AXIe 2 slot chassis

# TESTING CONFIGURATIONS

## Testing configurations

Agilent M9018A PXle chassis	<ul style="list-style-type: none"> <li>• Tested using cabled PCI Express link with the M9021A PCIe cable interface and PXle embedded controllers.</li> <li>• Testing was performed with only a graphics card in its standard slot and Agilent-recommended PCIe host cable card installed <sup>1</sup></li> <li>• Laptop testing utilized the M9045B ExpressCard and Y1200B PCIe cable</li> <li>• Desktop/rack-mounted PC testing utilized the M9047A ExpressCard and Y1202A PCIe cable</li> <li>• Various versions of Microsoft Windows® were used for all testing. Upgrading to Windows 7 is recommended</li> </ul>
Agilent M9502A AXle chassis	<ul style="list-style-type: none"> <li>• Tested using: cabled PCI Express link,</li> <li>• Testing was performed with only a graphics card in its standard slot and Agilent-recommended PCIe host cable card installed <sup>1</sup></li> </ul>
Agilent M9505A AXle chassis	<ul style="list-style-type: none"> <li>• Laptop testing utilized the M9045B ExpressCard and Y1200B PCIe cable</li> <li>• Desktop/rack-mounted PC testing utilized the M9047A ExpressCard and Y1202A PCIe cable</li> <li>• Various versions of Microsoft Windows® were used for all testing. Upgrading to Windows 7 is recommended</li> </ul>

<sup>1</sup> Applies to desktop and rackmount computers only

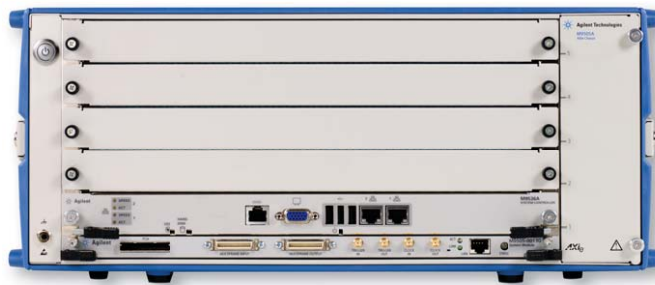


Figure 3. M9505A AXle chassis with M9536A controller

## Laptop personal computers <sup>2</sup>

Manufacturer	Model	BIOS	PCIe Link	Compatibility <sup>3</sup>		Comments
				AXle	PXle	
Hewlett Packard	Elite Book 8540P	68CVD Ver F.0A	x1 Gen 1	Yes	Yes	No restrictions
Hewlett Packard	Elite Book 8560P	68SCF Ver F.08	x1 Gen 1	Yes	Yes	Select Gen 1 BIOS setting for ExpressCard
Note: The following models are supported, but have been discontinued by the manufacturer (they may still be available through distribution channels).						
Dell	Precision M4400	A19	x1 Gen 1	Yes	Yes	No restrictions
Dell	Precision M4500	A04	x1 Gen 1	Yes	Yes	No restrictions
Dell	Studio 15z	A04	x1 Gen 1	Yes	Yes	No restrictions
Hewlett Packard	Elitebook 8530p	F.11	x1 Gen 1	Yes	No	No restrictions
Hewlett Packard	Elitebook 8440p	68CCU Ver. F.OB	x1 Gen 1	Yes	Yes	No restrictions
Hewlett Packard	Elitebook 8540w	68CVD Ver. F.OE	x1 Gen 1	Yes	Yes	No restrictions
Hewlett Packard	6930p	68PCU Ver F.OB	x1 Gen 1	Yes	Yes	No restrictions
Hewlett Packard	Pavilion dv8	F.17	x1 Gen 1	Yes	Yes	No restrictions
MSI	A6200	E1681IMR VER. 105	x1 Gen 1	Yes	Yes	No restrictions

<sup>2</sup> Laptops require the use of ExpressCard® x1 interface cards and therefore will exhibit lower performance than desktop links; however, the advantage is a thinner cable and added portability.

<sup>3</sup> Compatibility is based on: 1) the ability to fully enumerate a chassis, 2) meeting the PCIe specification at PC slot's rated speed. This is impacted by many factors including computer bios and signal path within the computer and cable.

## Desktop personal computers

Manufacturer	Model	BIOS	PCIe Link	Compatibility <sup>1</sup>		Comments
				AXIe	PXIe	
Dell	T3500	From ftp. agilent.com	x8 Gen 2	Yes	Yes	It is not recommended to use PCIe slot 1 since it requires a BIOS update that is currently unavailable. Dell is currently working on a software update. Check ftp://ftp.agilent.com/pub/mpusup/BIOS for latest information including supported BIOS versions and slot and cable card/link width restrictions.
Dell	T5500	From ftp. agilent.com	x8 Gen 2	Yes	Yes	It is not recommended to use PCIe slot 1 since it requires a BIOS update that is currently unavailable. Dell is currently working on a software update. Check ftp://ftp.agilent.com/pub/mpusup/BIOS for latest information including supported BIOS versions and slot and cable card/link width restrictions.
Dell	T7500	From ftp. agilent.com	x8 Gen 2	Yes	Yes	It is not recommended to use PCIe slot 1 since it requires a BIOS update that is currently unavailable. Dell is currently working on a software update. Check ftp://ftp.agilent.com/pub/mpusup/BIOS for latest information including supported BIOS versions and slot and cable card/link width restrictions.
Hewlett Packard	Z400	3.07 Rev A	x4 Gen 1	Yes	No	Only Gen1x4 slot is supported (slot 3)
Note: The following models are supported, but have been discontinued by the manufacturer (they may still be available through distribution channels).						
Hewlett Packard	Elite 8000	1.07 Rev. A 10 Sep 2010	x4 Gen 1	Yes	No	Only Gen1x4 slot is supported (slot 2)
Hewlett Packard	ML150G6 Server	021	x8 Gen 2	Yes	No	Gen2x16 slot only.
Hewlett Packard	xw4600	01.22 rev A	x4 Gen 1	Yes	No	Only Gen1x4 slot is supported. Note: Some xw4600 computers contain a CFC and you must slide the clock isolation switch on the U4002A chassis to the non-default [left] position – see endnote.

1. Compatibility is based on: 1) the ability to fully enumerate a chassis, 2) meeting the PCIe specification at PC slot's rated speed. This is impacted by many factors including computer bios and signal path within the computer and cable.

### Rackmount personal computers

Manufacturer	Model	BIOS	PCIe Link	Compatibility <sup>1</sup>		Comments
				AXIe	PXIe	
Kontron	KISS IPC 760	08.00.15	x8 Gen 2	Yes	Yes	No restrictions

1. Compatibility is based on: 1) the ability to fully enumerate a chassis and 2) meeting the PCIe specification at PC slot's rated speed. This is impacted by factors including computer bios and signal path within the computer and cable.

### PXIe embedded personal computers

Manufacturer	Model	BIOS	System Slot PCIe Links	Comments
Agilent	M9036A	AG15	4x4 Gen 2 and 2x8 Gen 2	No restrictions
National Instruments	PXIe-8105	1.3.3 (1/1/1992)	Four link: 1x1 and 3x4 Gen 1	No restrictions
National Instruments	PXIe-8108	4.6.3 (10/28/2009)	4x1 Gen 1	No restrictions
National Instruments	PXIe-8133	4.6.3 (4/14/2010)	4x4 Gen 1	No restrictions

Note: The following models are supported, but have been discontinued by the manufacturer (they may still be available through distribution channels).

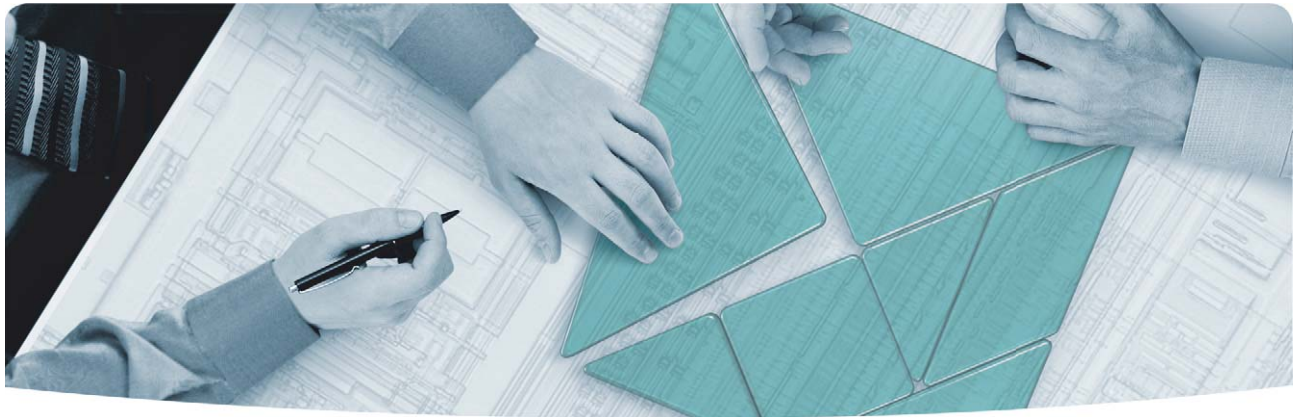
National Instruments	PXIe-8101	4.6.3 (6/5/2009)	4x1 Gen 1	No restrictions
----------------------	-----------	---------------------	-----------	-----------------

### AXIe embedded personal computers

Manufacturer	Model	BIOS	System Slot PCIe Links	Comments
Agilent	M9536A	AG10	AXIe PCIe Link x4 Gen 2	AXIe slot one only



Figure 4. M9018A 18-slot PXIe Chassis



## The Modular Tangram

The four-sided geometric symbol that appears throughout this document is called a tangram. This seven-piece puzzle originated in China a few centuries ago. The goal is to create shapes—from simple to complex—that form an identifiable silhouette. As with a tangram, the possibilities may seem infinite as you begin to create a new test system. With a set of clearly defined elements—architecture, hardware, software—Agilent can help you create the system you need, from simple to complex.



**DISCOVER** the Alternatives ...  
... Agilent **MODULAR** Products



Agilent Advantage Services is committed to your success throughout your equipment's lifetime. We share measurement and service expertise to help you create the products that change our world. To keep you competitive, we continually invest in tools and processes that speed up calibration and repair, reduce your cost of ownership, and move us ahead of your development curve.

[www.agilent.com/find/advantageservices](http://www.agilent.com/find/advantageservices)



[www.agilent.com/quality](http://www.agilent.com/quality)

PXI is a registered US trademark of PXI Systems Alliance. Visual Studio, Visual C, C++, and C#, and Visual Basic are registered trademarks of Microsoft Corporation. Windows and MS Windows are U.S. registered trademarks of Microsoft Corporation. MATLAB is a U.S. registered trademark of The Math Works, Inc.

Product specifications and descriptions in this document subject to change without notice.

© Agilent Technologies, Inc. 2012 Printed in USA, February 13, 2012  
5990-7632EN

[www.agilent.com](http://www.agilent.com)

[www.agilent.com/find/modular](http://www.agilent.com/find/modular)

For more information on Agilent Technologies' products, applications or services, please contact your local Agilent office. The complete list is available at: [www.agilent.com/find/contactus](http://www.agilent.com/find/contactus)

### Americas

Canada	(877) 894 4414
Brazil	(11) 4197 3600
Mexico	01800 5064 800
United States	(800) 829 4444

### Asia Pacific

Australia	1 800 629 485
China	800 810 0189
Hong Kong	800 938 693
India	1 800 112 929
Japan	0120 (421) 345
Korea	080 769 0800
Malaysia	1 800 888 848
Singapore	1 800 375 8100
Taiwan	0800 047 866
Thailand	1 800 226 008

### Europe & Middle East

Austria	43 (0) 1 360 277 1571
Belgium	32 (0) 2 404 93 40
Denmark	45 45 80 12 15
Finland	358 (0) 10 855 2100
France	0825 010 700*
	*0.125 €/minute
Germany	49 (0) 7031 464 6333
Ireland	1890 924 204
Israel	972-3-9288-504/544
Italy	39 02 92 60 8484
Netherlands	31 (0) 20 547 2111
Spain	34 (91) 631 3300
Sweden	0200-88 22 55
Switzerland	0800 80 53 53
United Kingdom	44 (0) 118 927 6201
Other European Countries:	<a href="http://www.agilent.com/find/contactus">www.agilent.com/find/contactus</a>

Revised: January 6, 2012



**Agilent Technologies**